

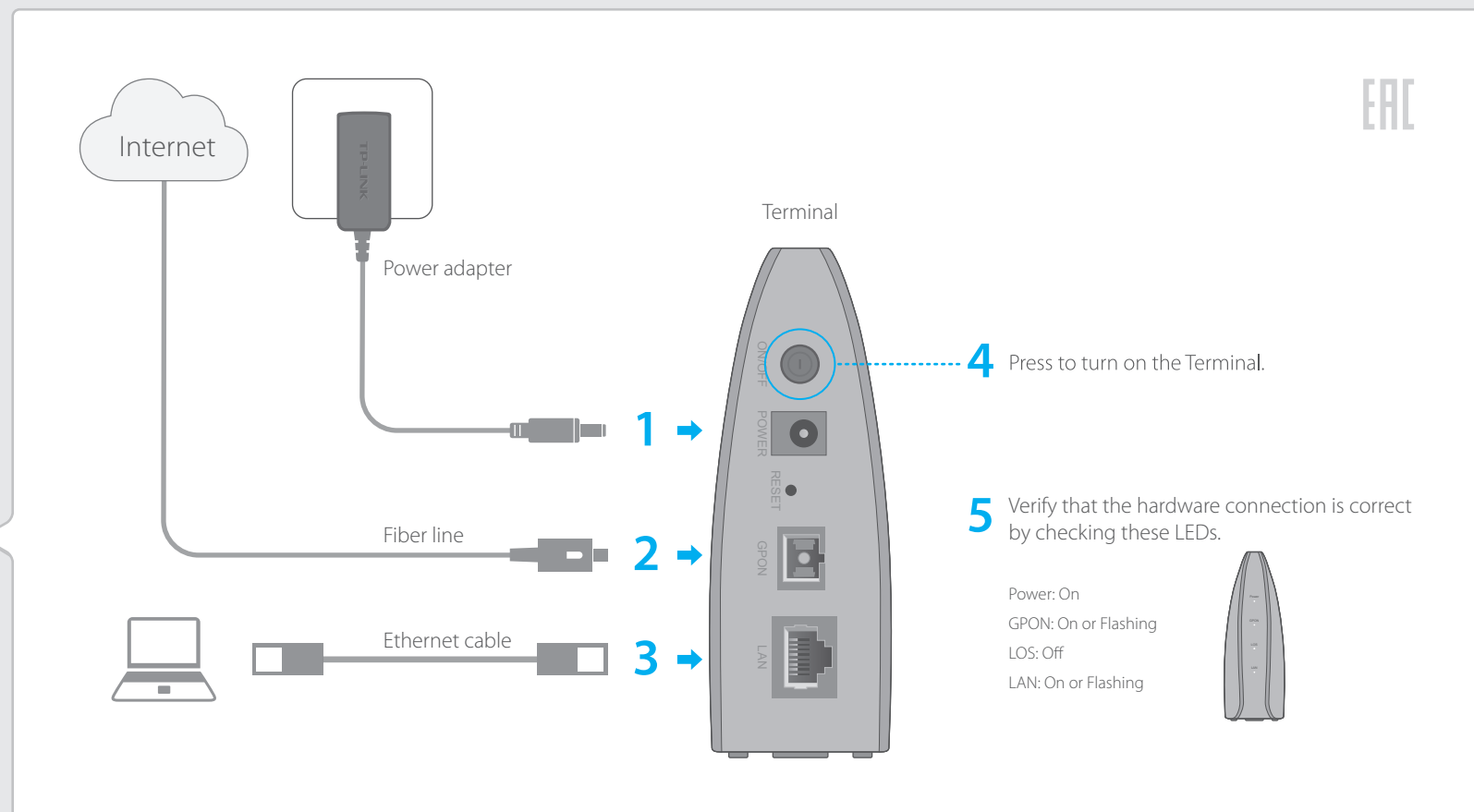
Quick Installation Guide

1-Port Gigabit GPON Terminal

TX-6610



Connect the Hardware



EAC

Register the Terminal

If the GPON LED is solid on, please skip to [Connect to the Internet](#).

- 1 Open a browser and type **http://192.168.1.1** in the address field. Use **admin** for both username and password, and then click **Login**.

- 2 Go to **Network Setting > PON Certification**. Enter the **GPON Password** and/or **GPON SN** provided by your ISP (Internet Service Provider) to register the Terminal and click **Save**.

Connect to the Internet

Establish your Internet connection according to the ISP's specific instructions.

Note: If you need assistance, contact your ISP.



LED Indicators

LED	Status	Indication
Power	On	Power is on.
	Off	Power is off.
GPON	On	The Terminal is registered with the ISP.
	Flashing	The Terminal is trying to register with the ISP.
	Off	The Terminal is not yet registered with the ISP.
LOS	On	The Terminal is unable to transmit optical signal.
	Flashing	No optical signal is received or the received signal is too weak.
	Off	The Terminal is receiving optical signal properly.
LAN	On	A device is connected to the LAN port.
	Flashing	The LAN port is transmitting or receiving data.
	Off	No device is connected to the LAN port.

FAQ (Frequently Asked Questions)


Q1. How do I change my computer’s setting to obtain an IP address automatically?

A. To change the computer's network settings, follow the steps below.


For MAC OS X

1. Click the **Apple icon** on the upper-left corner of the taskbar.
2. Go to **System Preferences > Network**.
3. Select **Ethernet** in the left panel.
4. Under **Configure IPv4**, select **Using DHCP**.
5. Click **Apply**.

For Windows 7/8/8.1

1. Right-click the **Network icon** (e.g. ) on the system tray and select **Open Network and Sharing Center > Change adapter settings**.
2. Right-click the wired network connection (**Local Area Connection** or **Ethernet** by default) and select **Properties**.
3. Double-click **Internet Protocol Version 4 (TCP/IPv4)**.
4. Select both **Obtain an IP address automatically** and **Obtain DNS server address automatically**, then click **OK**.
5. Click **OK** again to save your configuration.

For Windows XP

1. Right-click the **Network icon** (e.g. ) on the system tray and select **Open Network Connections**.
2. Right-click the wired network connection (**Local Area Connection** by default) and select **Properties**.
3. Double-click **Internet Protocol (TCP/IP)**.
4. Select both **Obtain an IP address automatically** and **Obtain DNS server address automatically**, then click **OK**.
5. Click **OK** again to save your configuration.

Q2. What can I do if I cannot access the web management page?

- A1. Make sure that the computer is properly connected to the Terminal via the Ethernet cable.
- A2. Make sure that the computer connected to the Terminal is set to **obtain an IP address automatically**. Refer to **Q1** for instructions.
- A3. Make sure that **http://192.168.1.1** is correctly entered, or use another web browser and try again.
- A4. Disable then enable the network adapter being used.
- A5. Restore the Terminal to its factory default settings and reconfigure your Terminal by following the instructions in this Quick Installation Guide.

Q3. What can I do if I cannot access the Internet?

- A1. Make sure that all cables are connected properly and securely to the Terminal.
- A2. Check the GPON LED and make sure that it is lit and stable, indicating that the Terminal is registered with the ISP. If not, make sure that the provided **GPON Password** and/or **GPON SN** are entered correctly in the **Network Setting > PON Certification** page.
- A3. Unplug and reconnect the fiber cable to the Terminal. Wait for 2 minutes and try again.
- A4. Make sure that you follow your ISP's specific instructions to connect to the Internet.
- A5. Make sure that the computer connected to the Terminal is set to **obtain an IP address automatically**. Refer to **Q1** for instructions.
- A6. Contact your ISP if the problem still exists.

Q4. How do I restore my Terminal to its factory default settings?

- A. With the Terminal powered on, press and hold the **RESET** button on the rear panel of the Terminal until all LEDs turn back on momentarily, then release the button.



RESET Button
Press and hold for 5 seconds

For advanced configuration, refer to the User Guide which can be downloaded at <http://www.tp-link.com/en/download-center.html>